

EDGE 210Mx 2 x 10" Stage Monitor

(Preliminary information)



EDGE 210Mx is a compact, high performance stage monitor loudspeaker.

Twin 10" LF transducers with Tetracoil double voice coils confer exceptional power, precise control, improved impulse response and handling of transients. The cabinet's bass reflex design incorporates a pair of tuned vents for enhanced LF performance and ultra-low distortion. A high specification 2.4" neodymium HF transducer is loaded by a custom ABS 70°x 50° waveguide, delivering excellent feedback resistance and exceptionally even coverage across the listening plane.

Weighting in at just 16.5kg and with a discreet 335mm profile, EDGE 210Mx is highly portable and preserves sightlines between performers and audience. Side-mounted speakON input / link connectors simplify onstage cabling.

An Internal filter matches the phase and frequency response of the bi-amp version (EDGE 210M) when used with the dedicated SCiO or Armonia preset.

EDGE 210Mx is proudly made in Belgium and protected by a tour-proven, weather-resistant coating.



70° x 50°



50Hz - 18kHz

Technical specifications

Description	Stage monitor loudspeaker
Transducers	LF: 2x10" Tetracoil • HF: 1x2.4"
Frequency range (-6dB)	50Hz - 18kHz
Nominal directivity (-6dB)	70°x 50°
Peak SPL (1)	135 dB
Processing	Dedicated AUDIOFOCUS A series SCiO and Powersoft Armonia presets
Connectors	2 x 4-point speakON In / Link (on side panel)
Nominal Impedance	LF 8 ohm - HF 8 ohm
Watt AES/peak	700 / 3120W
Dimensions (H x W x D)	335 x 540 x 475mm • 13.2 x 21.3 x 18.7 inches
Weight	16.5kg / 36.4lbs
Finish	Highly resistant polyurea coating
Cabinet	High grade birch plywood

(1) Mtone 12 dB crest factor with compression of 2dB average in the low section

Related Products

EDGE 210M
2 x 10" bi-amp stage monitor



A-3004 SCiO
4 x 3000W amplifier with DSP

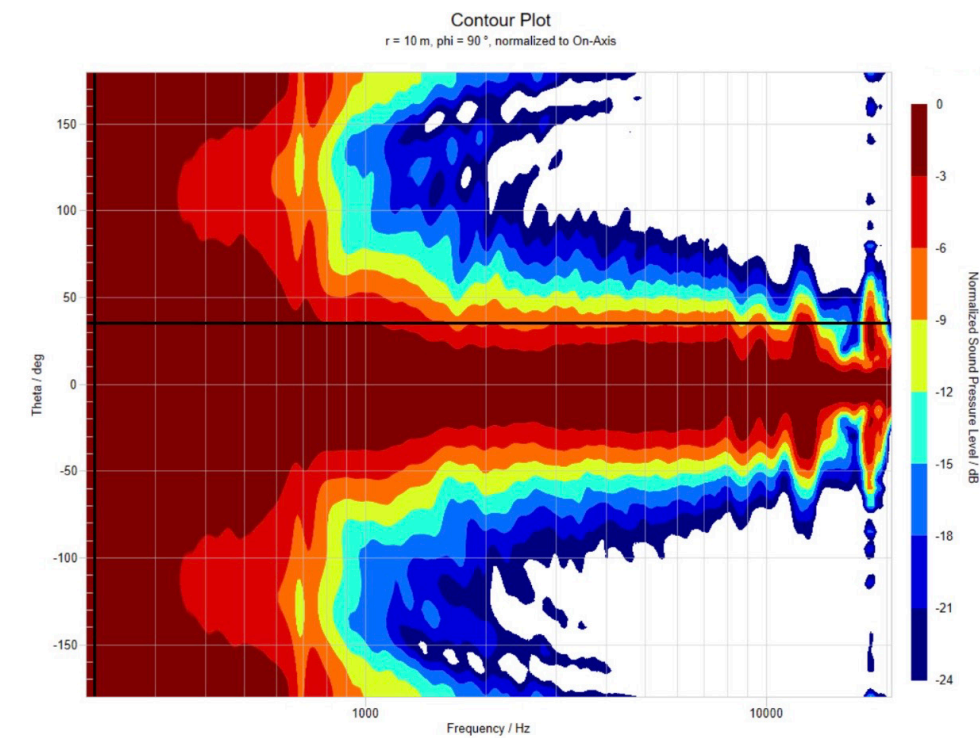


A-1504 SCiO
4 x 1500W amplifier with DSP

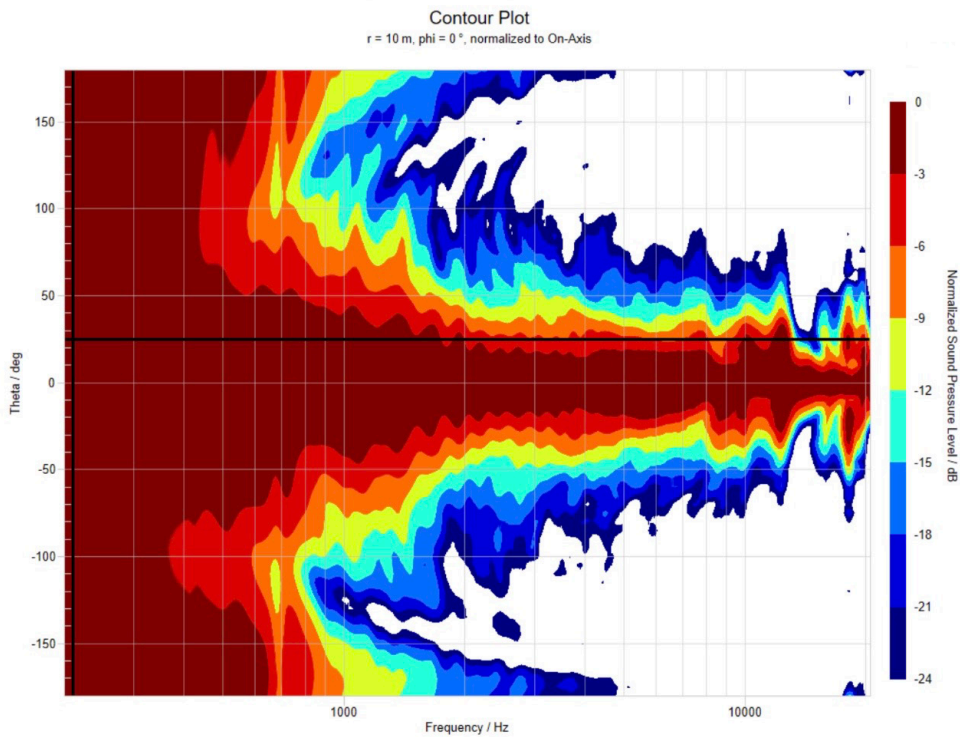


Beamwidth

EDGE 210Mx 70° beamwidth



EDGE 210Mx 50° beamwidth



Contact & Links

Need more information about our products ?

www.audiofocus.eu

info@audiofocus.eu

www.facebook.com/AudiofocusPage/

www.facebook.com/groups/AUDIOFOCUS/

Scan QR Code to view the EDGE 210Mx web page:



Follow Us.

