



AUDIOFOCUS SCiO Presets

Version 1.3 (English) - Firmware 1.3.3 or later

AUDIOFOCUS SCiO Presets are packaged as Speaker Files (*.cpspkr) or as Folder Files(*.cp-spkrfr) and are suitable for use with AUDIOFOCUS amplifiers running firmware 1.3.3 or later. You can find the presets and folder files on the product page of every relevant speaker. A folder file contains all the relevant presets for the chosen speaker. So instead of uploading the speaker files one by one, you can upload them all together in a folder file.

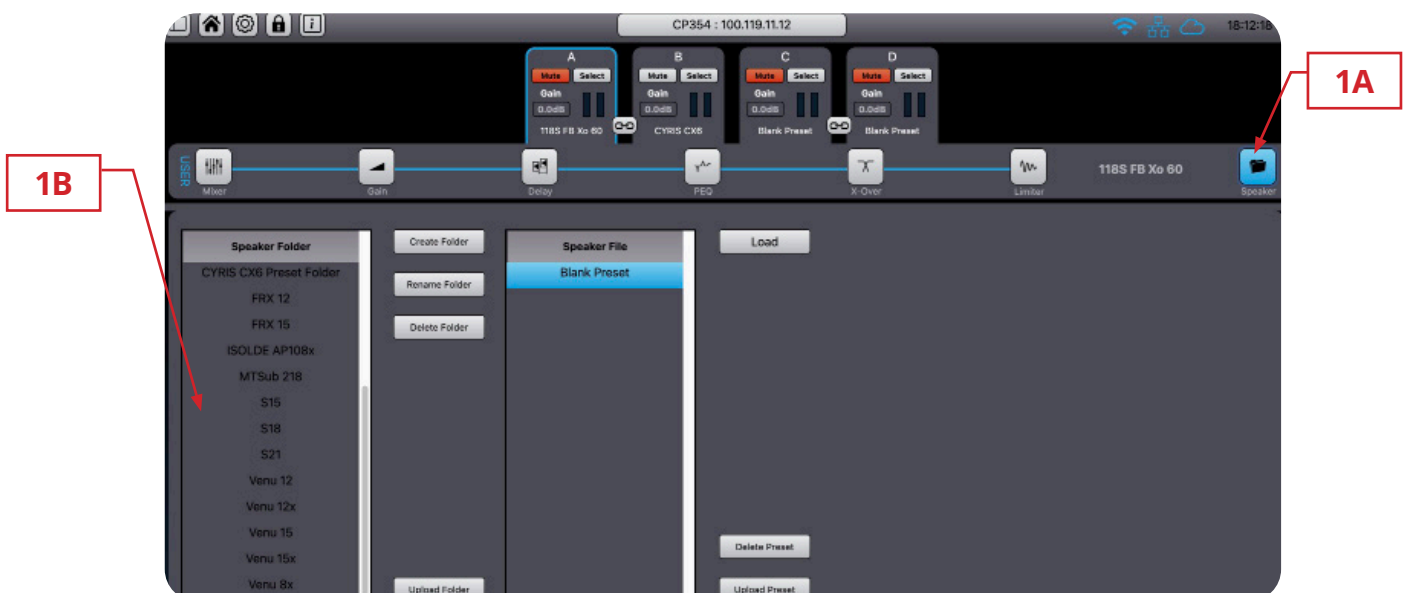
This document briefly describes how to upload and recall a Speaker File in your amplifier. From our website please download and read the SCiO User Manual to learn about all functions and features of amplifiers.

To load Speaker Files (*.cpspkr) first unzip the contents of the " Presets .zip" file to a convenient location for recall in Step 2C below.

1. See Figure 1.

A. Click the Speaker button.

B. Presets are stored in user-generated folders. Click the Create Folder button and give your folder a friendly name. In the example below a "Venu 8" folder was created. You may create an unlimited number of folders.



2. See Figures 2a and 2b.

A. Select your newly created folder.

B. Click the Upload Preset button.

C. Click the Choose File button in the pop-up window and select your desired preset.

D. Click the Upload button.

E. Repeat this procedure until all desired presets are uploaded. You may upload an unlimited number of presets.

Note: you cannot upload a preset to the Factory Folder

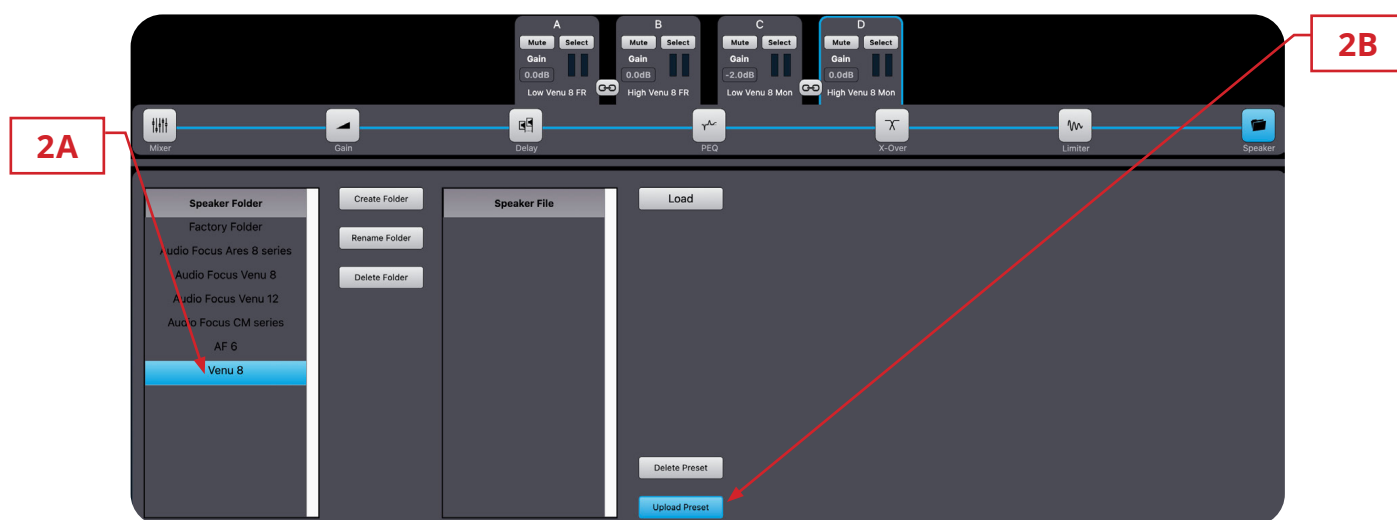


Figure 2a

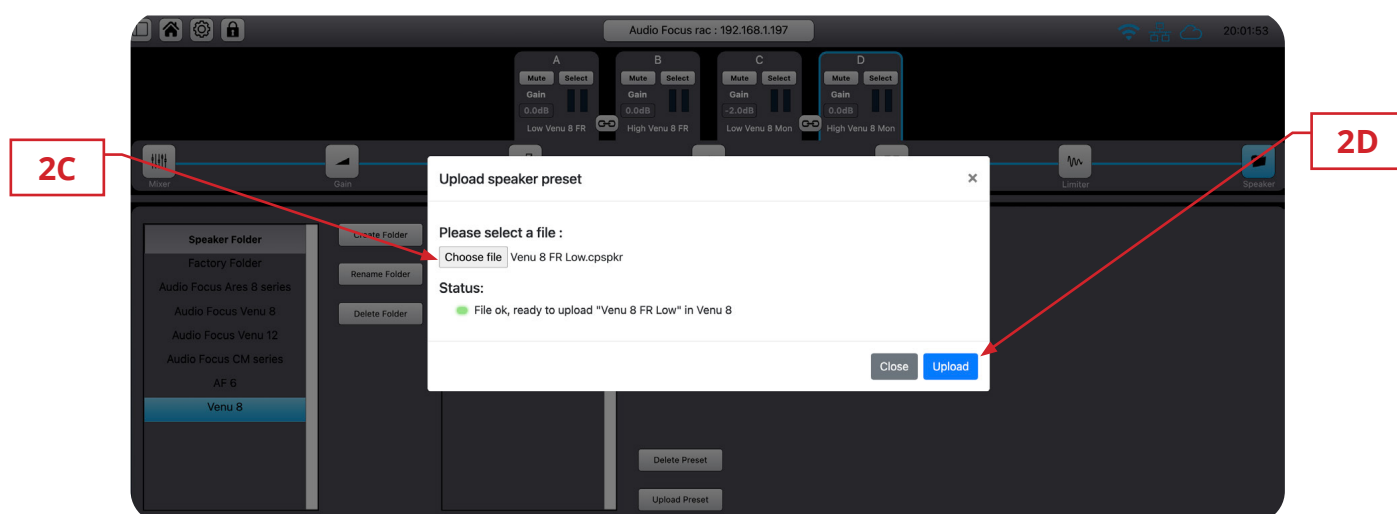


Figure 2b

3. See Figures 3a and 3b on the following page.

- A. Choose an amplifier output channel to load by clicking its Select button.
- B. Select your desired preset.
- C. Click the Load button.
- D. Click the check box to overwrite the amplifier output channel name with the preset's name. Clear check box to leave current output channel name as is.
- E. Click the Load button.
- F. Repeat this procedure until all desired presets are loaded.

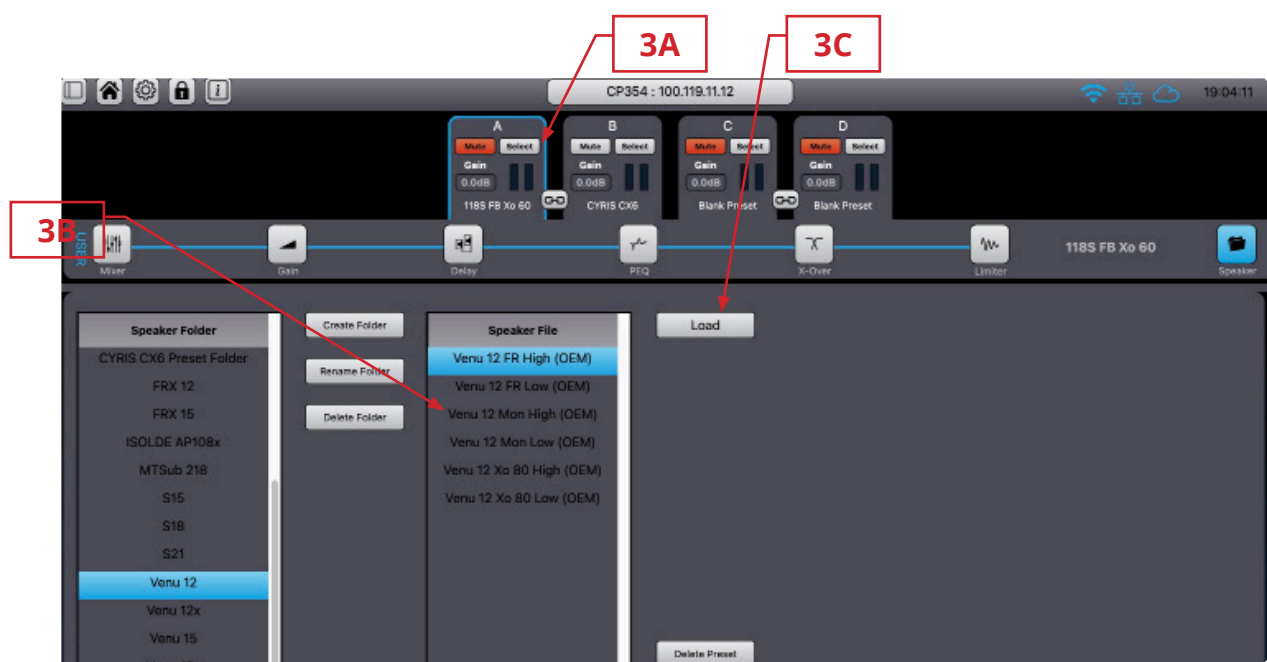


Figure 3a

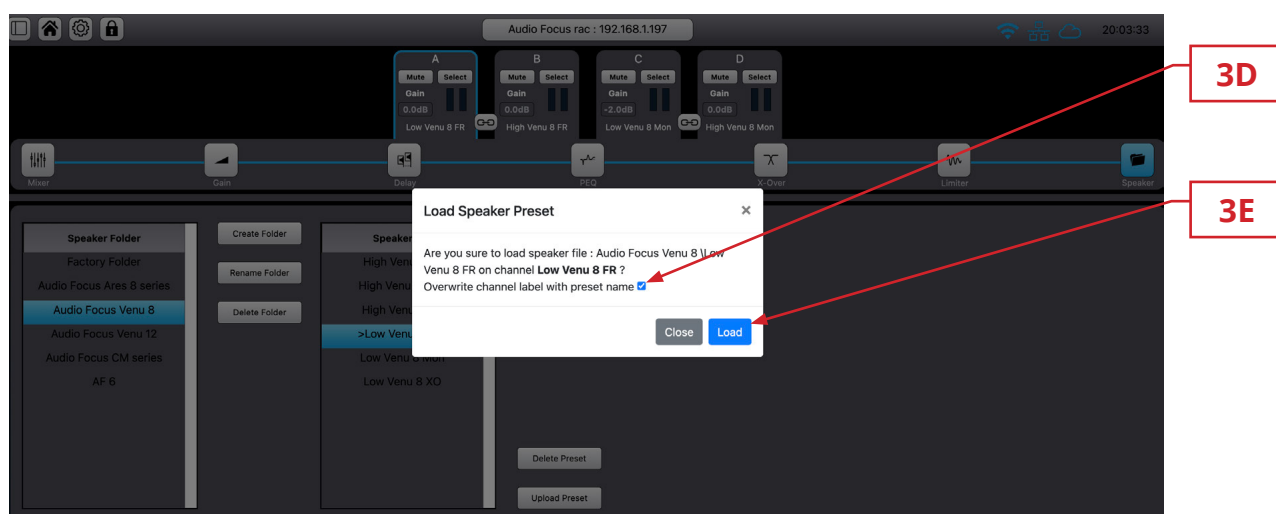


Figure 3b

4. See Figure 4.

A. In this example “overwrite channel label” was selected.

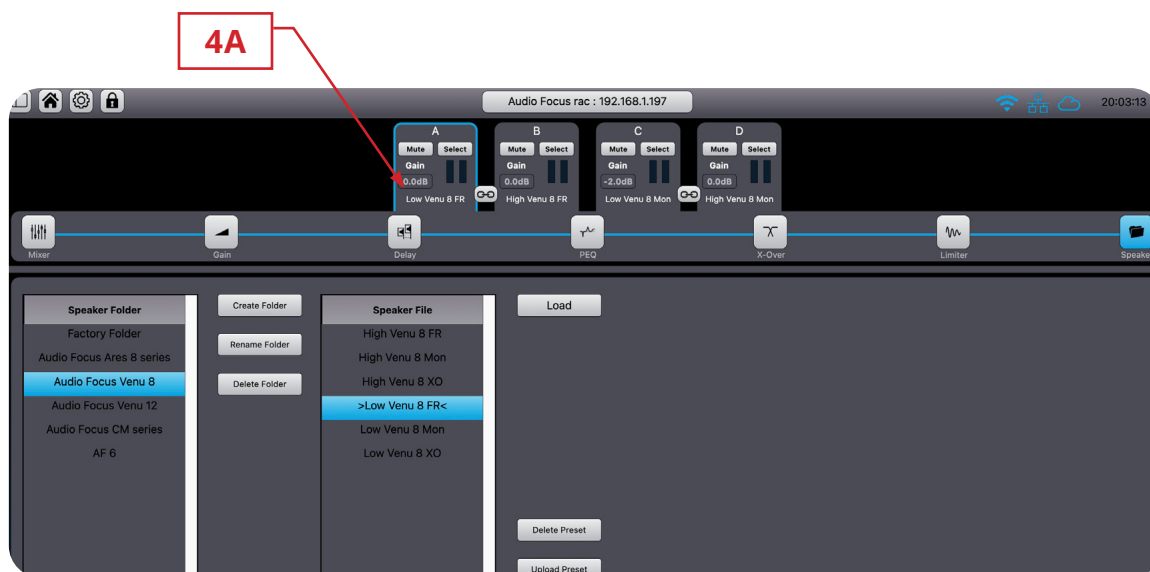


Figure 4

5. See Figure 5.

In firmware 1.3.3 there is an option to upload all presets from a folder file together to a folder created with a friendly name of your choice.

To upload a group of Speaker Files into a speaker folder first unzip the contents of the “Presets .zip” file to a convenient location for recall in Step 5C below.

A. Click the Speaker button.

B. Presets are stored in user-generated folders. Click the Create Folder button and give your folder a friendly name. In the example below a “Venu 8x” folder was created. You may create an unlimited number of folders.

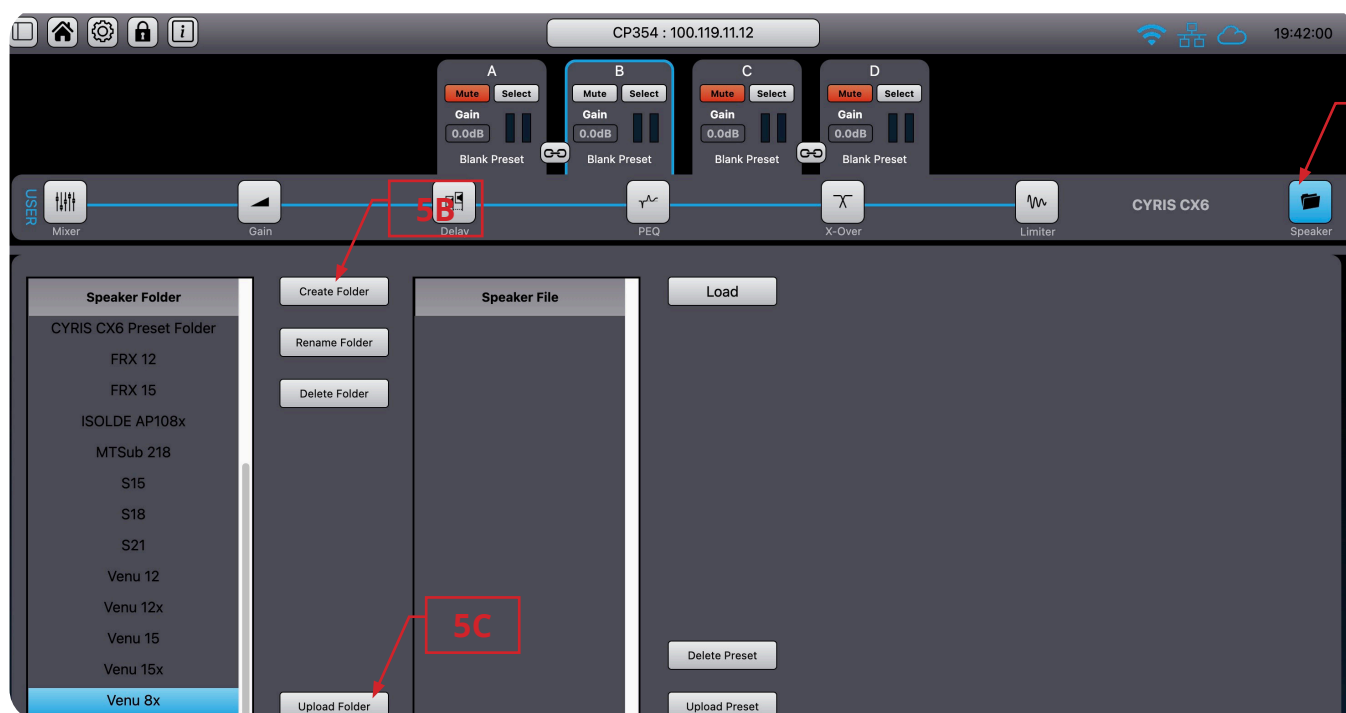
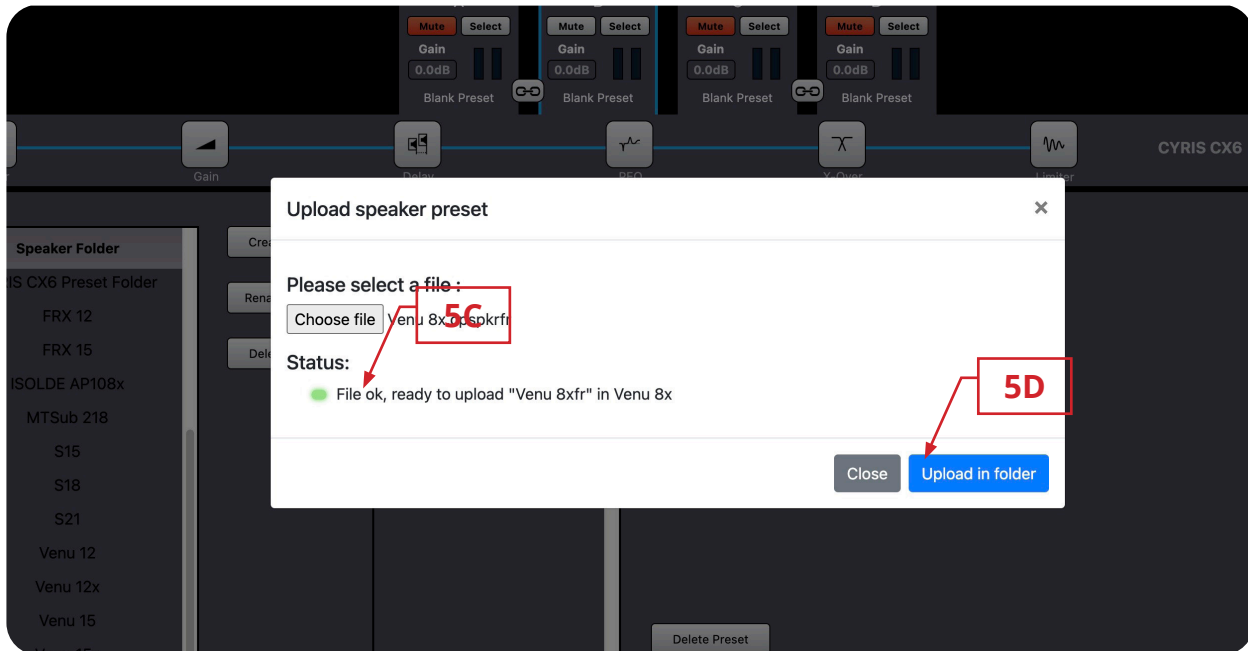


Figure 5

C. Select "Upload Folder " and select the (*.cpspkrfr) from the unzipped file from your harddrive.

D. Select "Upload in folder" to execute.



See Figure 6

A. All the presets from the selected Folder file will appear in the speaker File area.

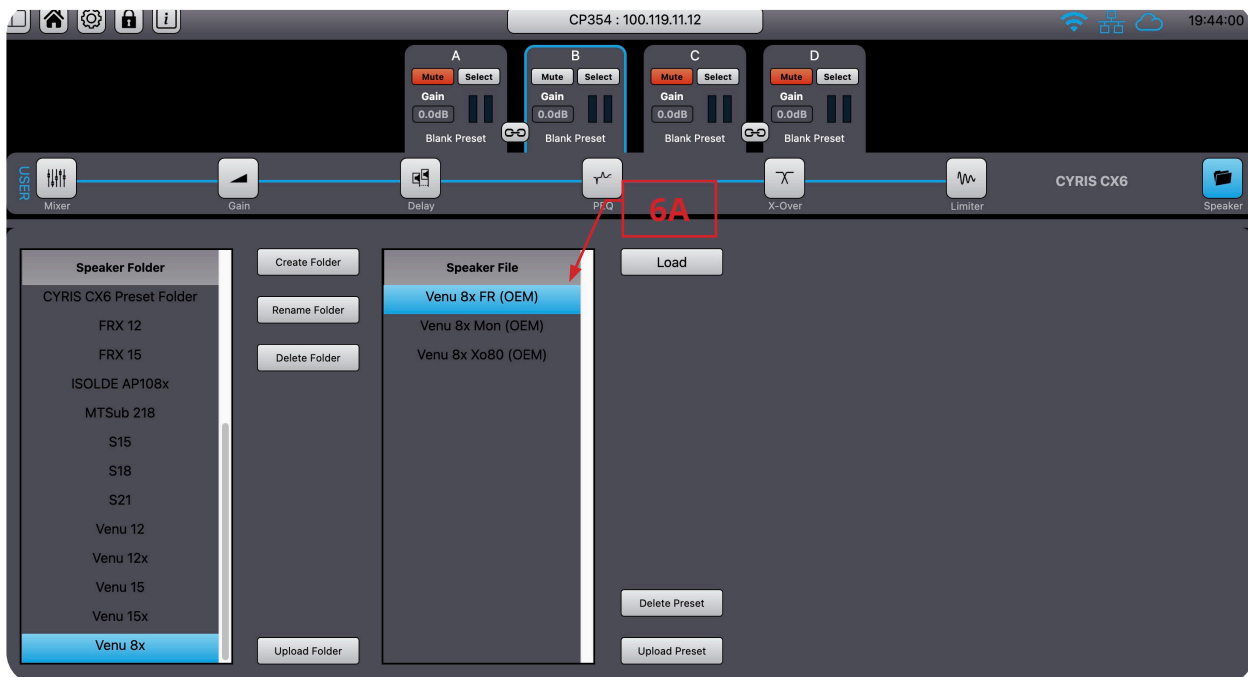
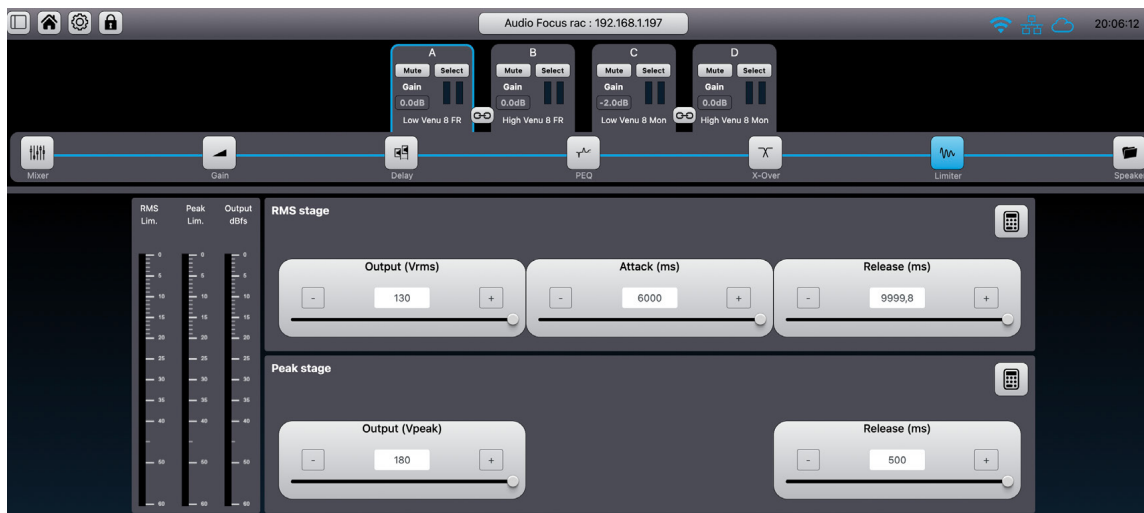


Figure 6

Notes :

- Bi-amplified loudspeakers require recall of two presets: an LF channel and an HF or HF_LF (coax) channel.
- All preset parameters are hidden from view other than the aforementioned adjustable high/low pass filters. X-Over (Figure 5) and Limiter (Figure 6) tabs remain visible but there is no need to adjust these parameters further.
- Factory limiter settings are selected to provide optimum sound quality and a healthy measure of system protection with minimal sacrifice of maximum SPL. They are intended to provide an added measure of reliability when a system is used responsibly; not to protect against want on abuse. In the event of component damage standard warranty conditions apply.



CONTACT AND LINKS

Need more information about our products ?

www.audiofocus.eu

info@audiofocus.eu

www.facebook.com/AudiofocusPage/

www.facebook.com/groups/AUDIOFOCUS/

Follow Us.



Figure 5