

# ARROCC CC210Wa

2×10" self-powered constant curvature loudspeaker



Medium throw



90/70° x 25°



55Hz - 19kHz

CC210Wa is a core element of the ARROCC constant curvature system, mounting twin 10" LF transducers in a V formation and featuring Tetracoil Double Voice Coil technology for exceptional power, precision control, impulse response and handling of transients. A large next-gen titanium diaphragm 4" HF compression driver delivers superior linearity and mid-band clarity.

Thanks to a forthcoming adjustable horn plug option, CC210Wa's wide 90° x 25° coverage can be adjusted to 70° x 25°V when desired. ARROCC employs the 3D printed SEVERIN precision waveguide for ultra-precise definition of coverage patterns, achieving the optimal listening experience for all audience members.

CC210Wa (wide) can be freely combined with CC210Na (narrow) cabinets and 118Sa subs, forming a flexible, modular solution for every medium throw sound reinforcement scenario. Versatile rigging options allow ARROCC systems to be flown or stacked horizontally and vertically, pole mounted, or fixed to walls or ceilings.

Intuitive SCiO software enables remote control of CC210Wa's integral amplifier from any device.

ARROCC CC210Wa is built in Belgium by skilled craftspeople and state-of-the-art machinery.

## Technical specifications

Description	Wide coverage 2x10" self-powered constant curvature loudspeaker
Transducers	LF: 2x10" • HF: 1x1.5" exit compression driver / voice coil diameter 4"
Frequency range (-6dB)	55Hz - 19kHz
Nominal directivity (-6dB)	90°x25° • External plate option for 70° coverage
Peak SPL (1)	133 dB
Processing	Dedicated AUDIOFOCUS SCiO presets
Rigging	Horizontal and vertical rigging frames, hanging bracket, and pole mount
Audio Connectors	IN: 1x3-point XLR LINK: 1x3-point XLR
Network Connectors	1x etherCON for control
Power Connectors	IN: 1x3-point powerCON TRUE1TOP LINK: 1x3-point powerCON TRUE1TOP
Dimensions (H x W x D)	626 x 343 x 400mm • 25 x 13,5 x 15,7 inches
Weight	32kg / 71lbs
Finish	Highly resistant polyurea coating
Cabinet	High grade birch plywood

(1) Mtone 12 dB crest factor

## Subwoofers

---

### 118Sa

Touring self-powered compact  
18" subwoofer



Ref. : 48441

### 118SGa

Ground stack 18"  
self-powered subwoofer

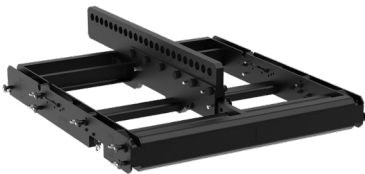


Ref. : 48557

## Accessories

---

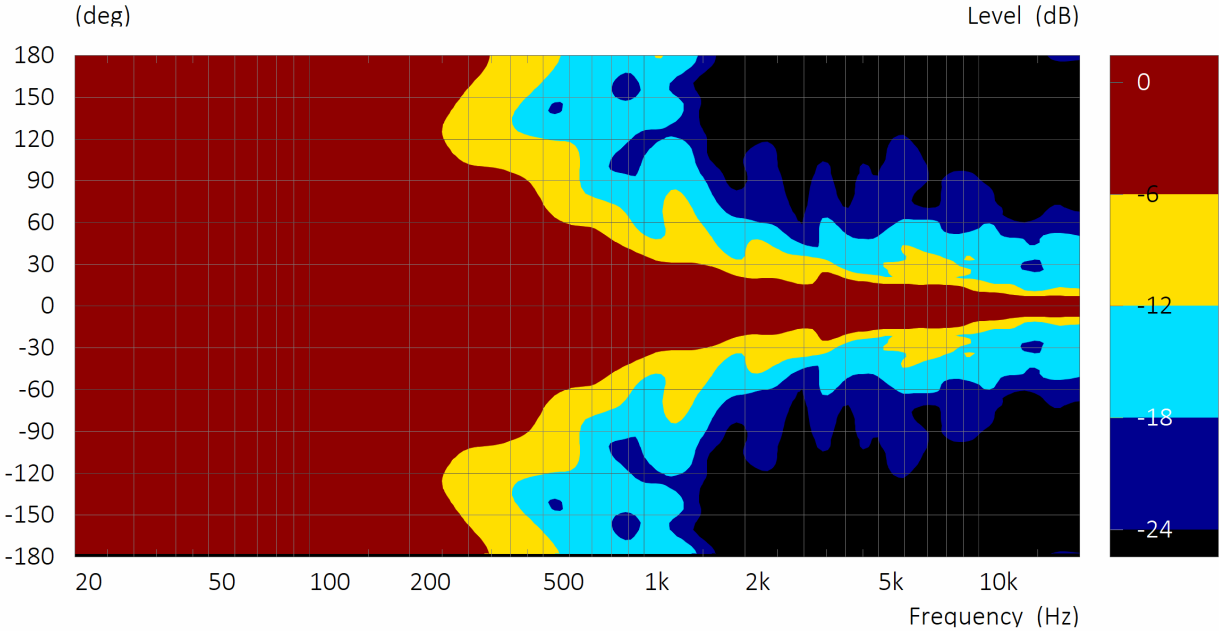
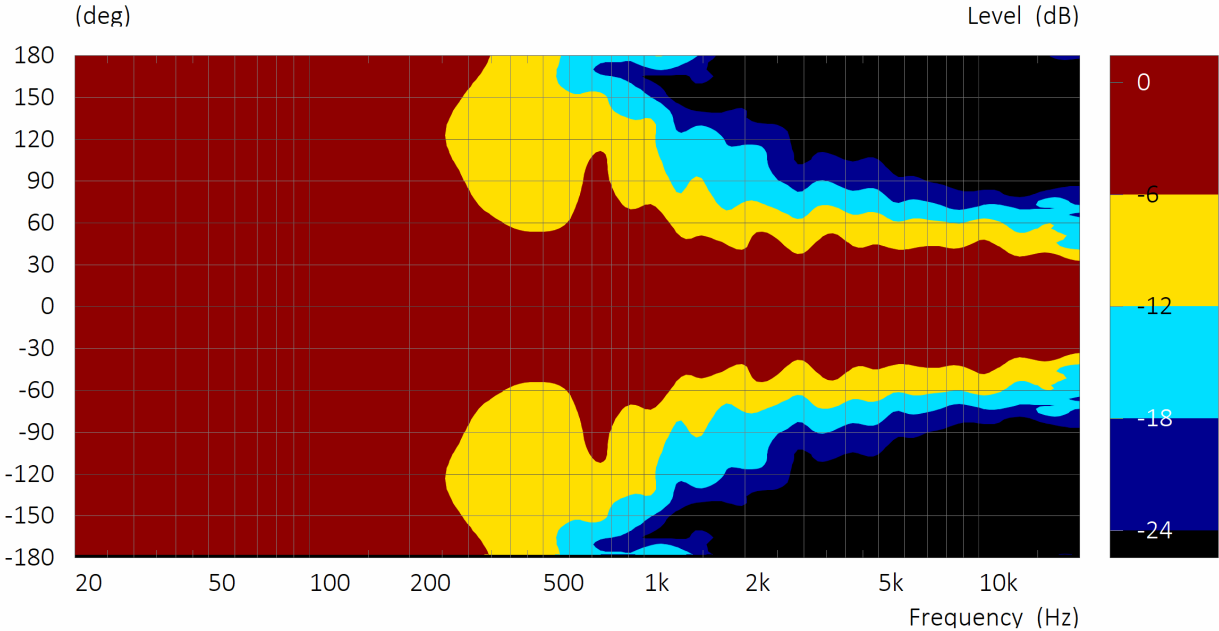
48466	CC210W Horn Plug	2 x adjustable magnetic plugs to narrow CC210W directivity pattern by 10° per plug
48456	210 Frame	Flying frame for CC210 wide and narrow compatible with 118S subwoofers
48738	210 Lift	Bracket for 2x CC 210 Touring version for vertical mounting
48530	210 Beam	Lifting bar for 210 Frame and vertical coupling bar for CC210N/W
48481	CC210 U Bracket	Foldable U-bracket for CC210 to hang with clamps or mount on a pole (not included)
48505	CC210W Rear lifter	Pair of feet to tilt the rear of the CC210W
48502	FC 2x CC210W	Flightcase on wheels for 2x CC210W
48731	CC206 U-bracket	Foldable U-bracket for 2x CC206 to be suspended or mounted on a pole



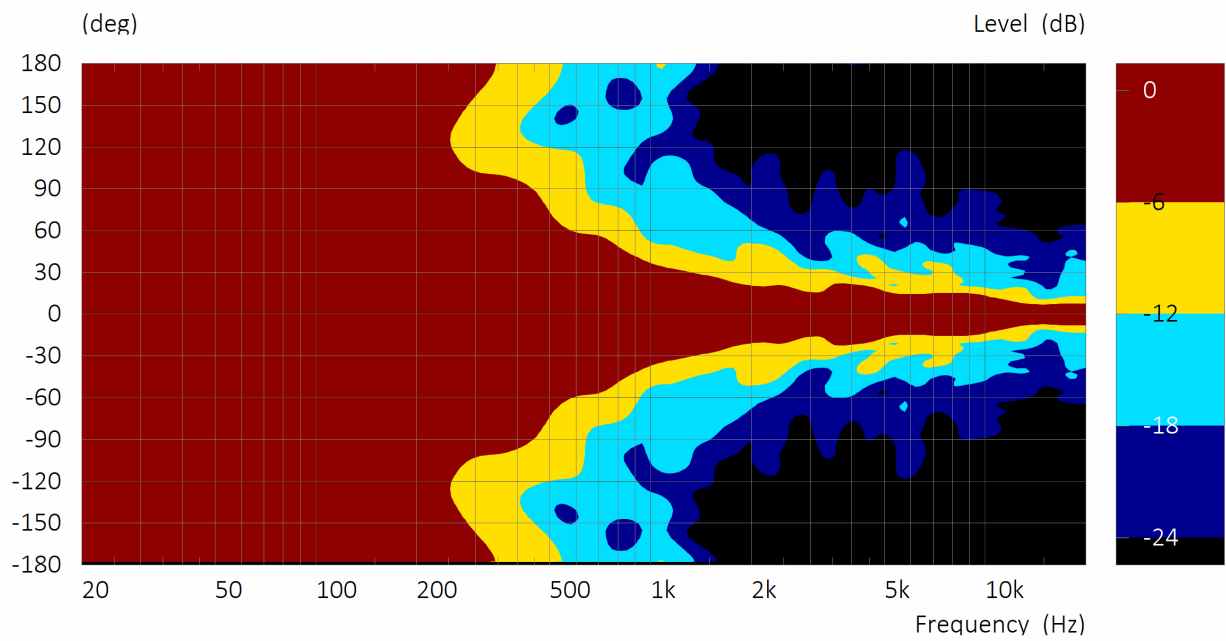
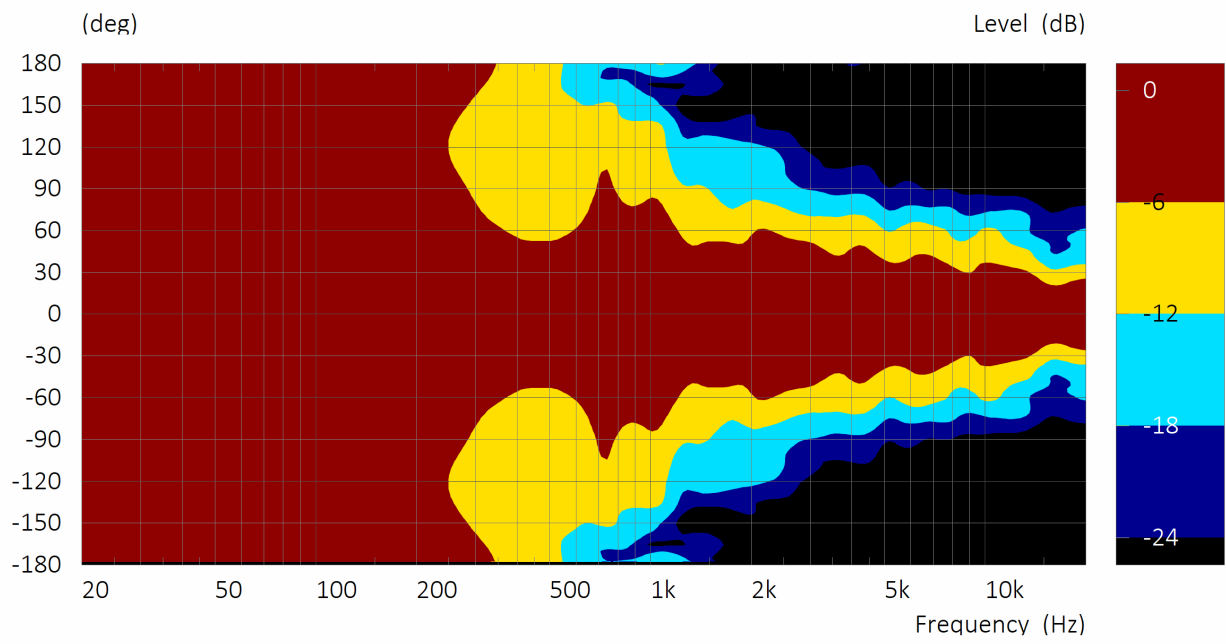
Ref. : 48456 + 48530

# Beamwidth

## ARROCC CC210Wa 90° beamwidth



# ARROCC CC210Wa 70° beamwidth



## Contact & Links

---

### Need more information about our products ?

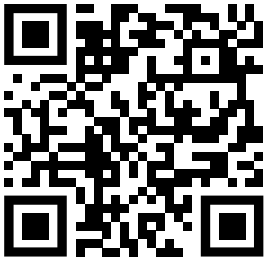
[www.audiofocus.eu](http://www.audiofocus.eu)

[info@audiofocus.eu](mailto:info@audiofocus.eu)

[www.facebook.com/AudiofocusPage/](https://www.facebook.com/AudiofocusPage/)

[www.facebook.com/groups/AUDIOFOCUS/](https://www.facebook.com/groups/AUDIOFOCUS/)

Scan QR Code to view the ARROCC CC210Wa web page:



Follow Us.

