

ARROCC CC210Wx

2×10" passive constant curvature loudspeaker



Medium throw



90/70° x 25°



55Hz - 19kHz

CC210Wx is a core element of the ARROCC constant curvature system, mounting twin 10" LF transducers in a V formation and featuring Tetracoil Double Voice Coil technology for exceptional power, precision control, impulse response and handling of transients. A large next-gen titanium diaphragm 4" HF compression driver delivers superior linearity and mid-band clarity.

Thanks to a forthcoming adjustable horn plug option, CC210Wx's wide 90° x 25° coverage can be adjusted to 70° x 25° when desired. ARROCC employs the 3D printed SEVERIN precision waveguide for ultra-precise definition of coverage patterns, achieving the optimal listening experience for all audience members.

CC210Wx (wide) can be freely combined with CC210N (narrow) cabinets, 118S subs and A series amplifiers, forming a flexible, modular solution for every medium throw sound reinforcement scenario. Versatile rigging options allow ARROCC systems to be flown or stacked horizontally and vertically, pole mounted, or fixed to walls or ceilings.

ARROCC CC210Wx is built in Belgium by skilled craftspeople and state-of-the-art machinery.

Technical specifications

Description	Wide coverage 2x10" bi-amp constant curvature loudspeaker
Transducers	LF: 2x10" • HF: 1x1.5" exit compression driver / voice coil diameter 4"
Frequency range (-6dB)	55Hz - 19kHz
Nominal directivity (-6dB)	90°x25° • External plate option for 70° coverage
Peak SPL (1)	133 dB
Processing	Dedicated AUDIOFOCUS A series and Powersoft Armonia presets
Rigging	Horizontal and vertical rigging frames, hanging bracket, and pole mount
Connectors	2 x 4-point speakON
Nominal Impedance	8ohm
Watt/AES Peak	860/3440W
Dimensions (H x W x D)	626 x 343 x 400mm • 25 x 13,5 x 15,7 inches
Weight	30kg / 66lbs
Finish	Highly resistant polyurea coating
Cabinet	High grade birch plywood

(1) Mtone 12 dB crest factor

Subwoofers

118S

Touring passive compact 18" subwoofer



Ref. : 48440

118SG

Ground stack 18" passive subwoofer self-powered



Ref. : 48556

Amplifiers

A 1504 SCiO

4 x 1500W amplifier with DSP



Ref. : 48186

A 3004 SCiO

4 x 3000W amplifier with DSP

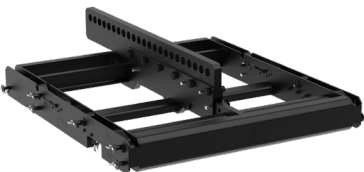


Ref. : 48188

Accessories

48466 CC210W Horn Plug
48456 210 Frame
48738 210 Lift
48530 210 Beam
48481 CC210 U Bracket
48505 CC210W Rear lifter
48502 FC 2x CC210W
48731 CC206 U-bracket

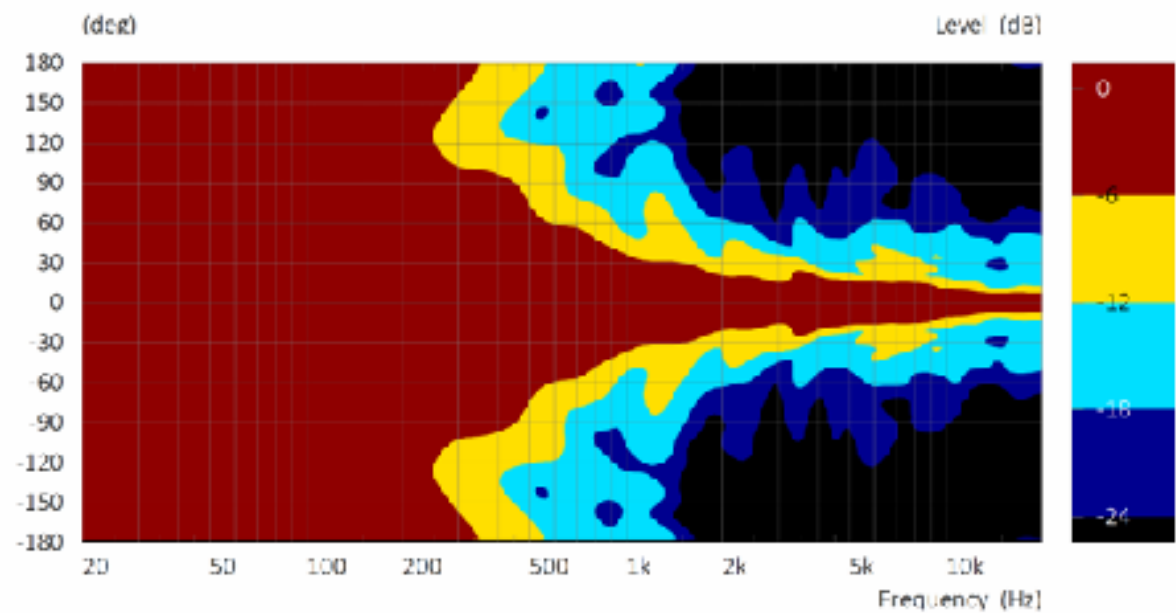
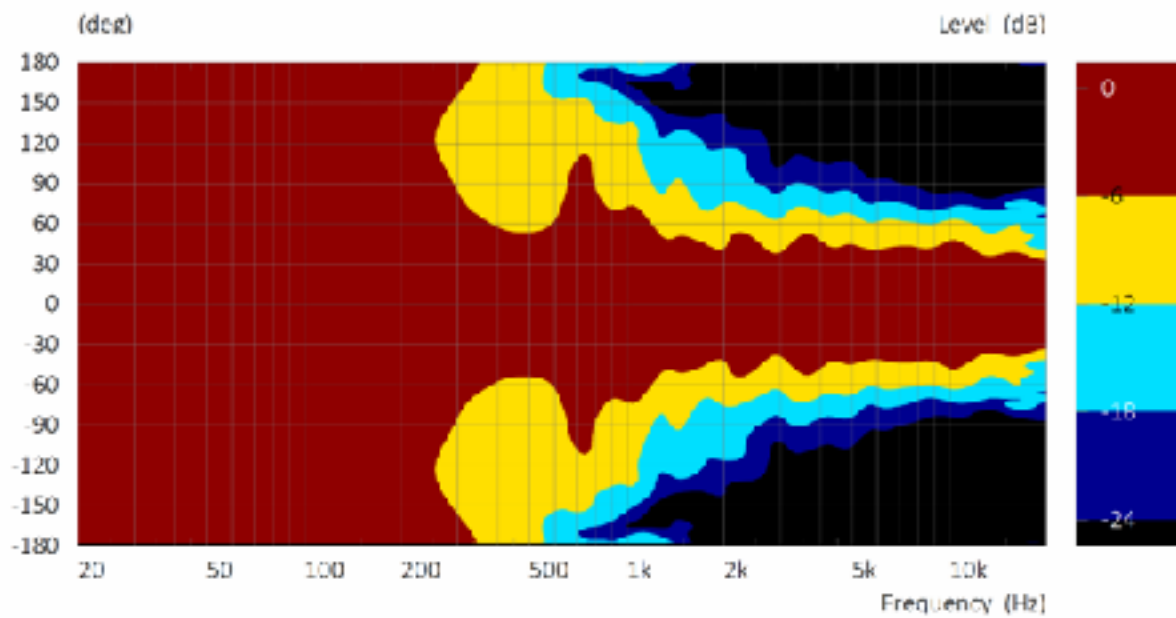
2 x adjustable magnetic plugs to narrow CC210W directivity pattern by 10° per plug
Flying frame for CC210 wide and narrow compatible with 118S subwoofers
Bracket for 2x CC 210 Touring version for vertical mounting
Lifting bar for 210 Frame and vertical coupling bar for CC210N/W
Foldable U-bracket for CC210 to hang with clamps or mount on a pole (not included)
Pair of feet to tilt the rear of the CC210W
Flightcase on wheels for 2x CC210W
Foldable U-bracket for 2x CC206 to be suspended or mounted on a pole



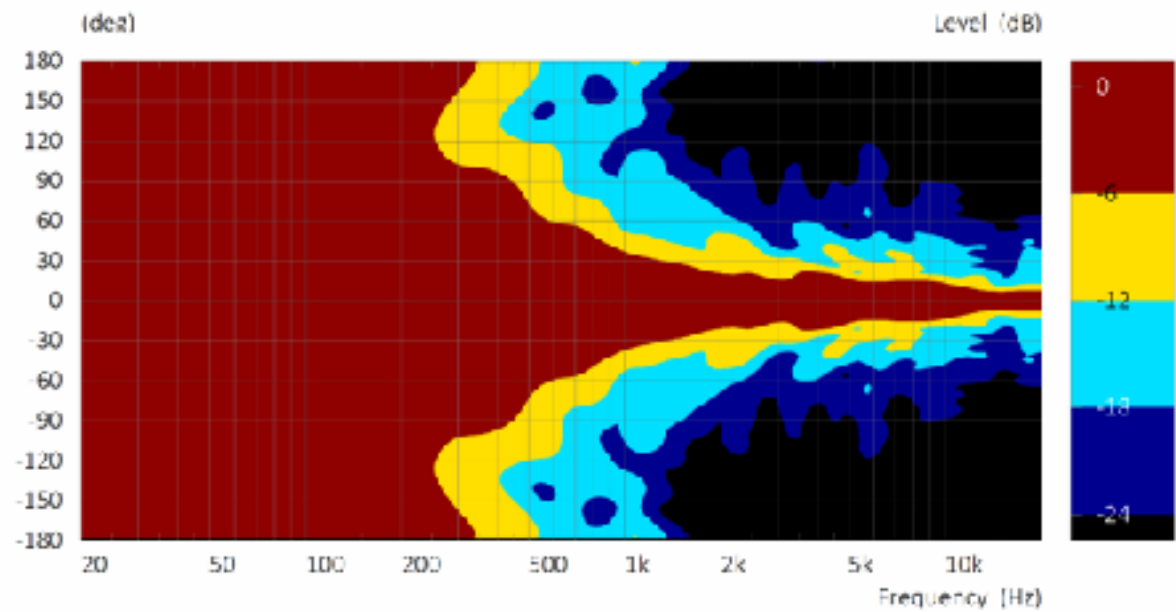
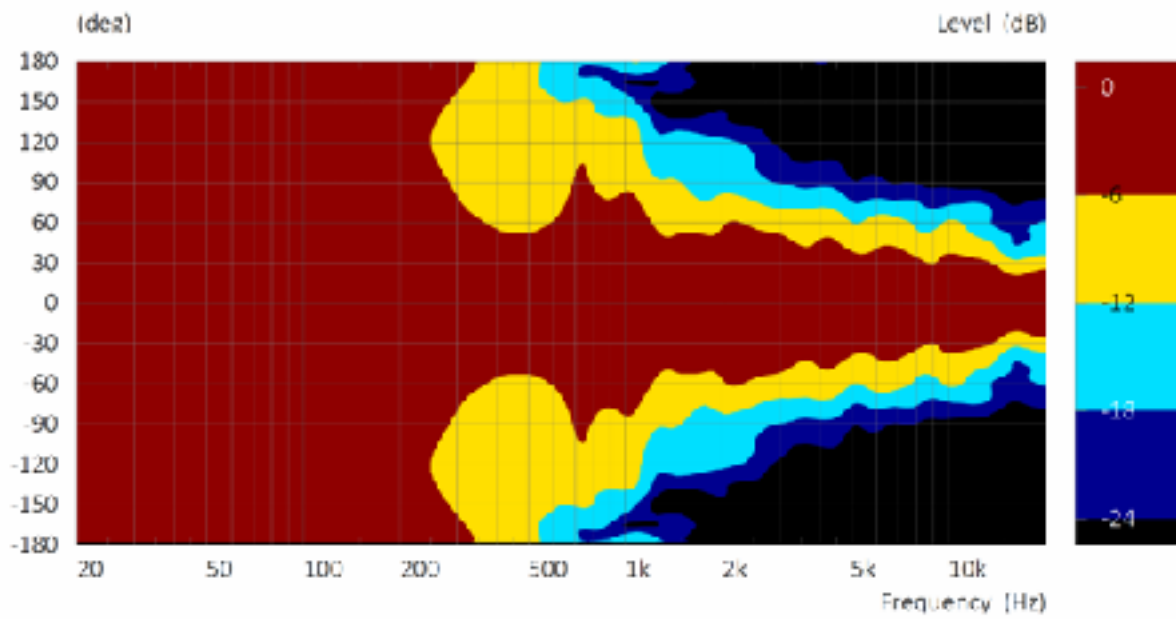
Ref. : 48456 + 48530

Beamwidth

ARROCC CC210Wx 90° beamwidth



ARROCC CC210Wx 70° beamwidth



Contact & Links

Need more information about our products ?

www.audiofocus.eu

info@audiofocus.eu

www.facebook.com/AudiofocusPage/

www.facebook.com/groups/AUDIOFOCUS/

Scan QR Code to view the ARROCC CC210Wx web page:



Follow Us.

